



Company ID Number: 513798

To be accepted as a participant in E-Verify, you should only sign the Employer's Section of the signature page. If you have any questions, contact E-Verify at 888-464-4218.

Employer **SHOE CORPORATION OF BIRMINGHAM, INC.**

MICHELLE FINNEY

Name (Please Type or Print)

Title

Electronically Signed

03/01/2012

Signature

Date

Department of Homeland Security – Verification Division

USCIS Verification Division

Name (Please Type or Print)

Title

Electronically Signed

03/01/2012

Signature

Date

Information Required for the E-Verify Program

Information relating to your Company:

Company Name **SHOE CORPORATION OF BIRMINGHAM, INC.**

Company Facility Address **125 45TH PLACE NORTH**

BIRMINGHAM, AL 35222

Company Alternate
Address:

County or Parish: **JEFFERSON**

Employer Identification
Number: **630635690**



Company ID Number: 513798

North American Industry Classification Systems Code:	423
Administrator:	
Number of Employees:	10 to 19
Number of Sites Verified for:	1
Are you verifying for more than 1 site? If yes, please provide the number of sites verified for in each State:	
<ul style="list-style-type: none">• ALABAMA 1 site(s)	

Information relating to the Program Administrator(s) for your Company on policy questions or operational problems:

Name:	MICHELLE FINNEY	Fax Number:	(205) 326 - 2800
Telephone Number:	(205) 397 - 4261		
E-mail Address:	mfinney@shoecorp.com		



125-45th Place North, Birmingham, Alabama 35222

Toll Free 1-800-227-4934 Phone 205-326-2800 Fax 205-326-2808

RECYCLE CERTIFICATE

THIS IS TO CERTIFY THAT WE ARE USING RECYCLED MATERIALS IN THE MANUFACTURING OF OUR SHOES AND IN OUR BOXES AND PACKAGING MATERIALS TO THE MAXIMUM PER CENT AND STILL MAINTAIN OUR QUALITY PRODUCTS.

CANVAS SHOE STYLES

#393; #493; #540; #440; #326; #1011; #1012; #1024; #1030; #1150; #4049; #6199

UPPER: 20% RECYCLED MATERIALS

LINING: 15% RECYCLED MATERIALS

OUTSOLE: 10% RECYCLED MATERIALS

23% IS CONSIDERED THE RECYCLED CONTENT OF THE ENTIRE COST OF OUR CANVAS SHOES, INCLUDING THE PACKAGING.

LEATHER BOOT / SHOE STYLES:

#N193; #N194; #5050; #5055; #5087; #9750; #8740 #21; #5000; #1206; #2400; #2500; #2600; #2700; #2800; #2900; #3000; #3700; #42292; #41192; #622; #TX-190; #TX-L29; #TX-L492; #TX-2700; #V995

UPPER: 5% RECYCLED MATERIALS

LINING: 10% RECYCLED MATERIALS

OUTSOLE: 20% RECYCLED MATERIALS

20% IS CONSIDERED THE RECYCLE CONTENT OF THE ENTIRE COST OF LEATHER BOOTS / SHOES, INCLUDING THE PACKAGING.

SHOWER SHOES; VINYL BOOTS / STYLES:

#SC111; #555; #888; #V722; #722; #777; #1200; #502; #V5050; #11051V; #11052X; #SC999; #70774; #

TX-RB2310

MADE OF PVC; PLASTIC; OR EVA AND THE RECYCLE CONTENT IS 50%

55% IS THE RECYCLED CONTENT OF THE ENTIRE COST OF SHOWER SHOES INCLUDING THE PACKAGING.

SHOE CORP

SHOE CORPORATION OF BIRMINGHAM, INC.

125-45TH PLACE NORTH, BIRMINGHAM, ALABAMA 35222

1-800-227-4934 1-205-326-2800 FAX 1-205-326-2808 ORDERS@SHOECORP.COM

VISIT OUR **WEB SITE** FOR CURRENT CATALOG

www.shoecorp.com

EFFECTIVE DATE JANUARY 1, 2024

****SUGGESTED LIST PRICE ****

STYLE	DESCRIPTION	WIDTHS	SIZES	CASE QTY	PER PAIR
LEATHER--BOOTS					
5050	6" BLACK LEATHER STEEL TOE BOOT	REG; XWIDE	2.0 - 19; + 1/2 SIZES	12 PAIR	\$ 75.00
21	6" BLACK FULL GRAIN LEATHER BOOT	B/C/REG/EE/EEE/EEEE/EEEE	3.5 - 19; + 1/2 SIZES	12 PAIR	\$ 90.60
21	6" BROWN FULL GRAIN LEATHER BOOT	REG	4.5 - 18; + 1/2 SIZES	12 PAIR	\$ 90.60
5087	6" BLACK LEATHER COMPOSITE TOE BOOT	REG; WIDE	2.0 - 19 + 1/2 SIZES	12 PAIR	\$ 71.00
N193	6" BROWN LEATHER BOOT	REG; WIDE; XWIDE	2.0 - 20; + 1/2 SIZES	12 PAIR	\$ 50.60
N194	6" BLACK LEATHER BOOT	REG; WIDE; XWIDE	1.0 - 20; + 1/2 SIZES	12 PAIR	\$ 50.60
V995	6" BLACK LEATHER VELCRO BOOT	REG; WIDE	3.0 - 15; + 1/2 SIZES	12 PAIR	\$ 53.00
622	6" BLACK LEATHER BOOT	REG; WIDE	3.0 - 18; + 1/2 SIZES	12 PAIR	\$ 53.00
CANVAS --SHOES					
SC393	WHITE CANVAS HIGH TOP LACE BASKET BALL SHOE	WIDE	3.0 - 18	24 PAIR	\$ 23.40
SC493	BLACK CANVAS HIGH TOP LACE BASKET BALL SHOE	WIDE	2.0 - 19	24 PAIR	\$ 23.40
SC440	WHITE CANVAS LOW TOP LACE BASKET BALL SHOE	WIDE	2.0 - 16	24 PAIR	\$ 22.80
SC540	BLACK CANVAS LOW TOP LACE BASKET BALL SHOE	WIDE	2.0 - 19	24 PAIR	\$ 22.80
SC1011	BLACK CANVAS LOW TOP VELCRO BASKET BALL SHOE	WIDE	3.0 - 17	24 PAIR	\$ 23.85
SC1024	WHITE CANVAS LOW TOP VELCRO BASKET BALL SHOE	WIDE	2.5 - 17	24 PAIR	\$ 23.85
SC1012	WHITE OR BLACK HIGH TOP VELCRO BASKET BALL SHOE	WIDE	3.0 - 17	24 PAIR	\$ 23.10
SC326	CANVAS SLIP ON NAVY/ORANGE/WHITE	WIDE	4.0 -- 17	24 PAIR	\$ 22.05
6199	CANVAS SLIP ON NAVY/ORANGE/WHITE/BLACK	WIDE	2.0 - 19	24 PAIR	\$ 16.20
LEATHER--ATHLETICS					
41192	BLACK LEATHER NYLON VELCRO ATHLETIC JOGGER	REG	2.0 - 17; + 1/2 SIZES	12 PAIR	\$ 40.00
42292	WHITE LEATHER NYLON VELCRO ATHLETIC JOGGER	REG	2.0 - 17; + 1/2 SIZES	12 PAIR	\$ 40.00
2700	BLACK OR WHITE LEATHER ATHLETIC TIE OXFORD	REG; 4E	2.0 - 19; + 1/2 SIZES	12 PAIR	\$ 42.30
2800	BLACK OR WHITE LEATHER ATHLETIC VELCRO OXFORD	REG; 4E	1.0 - 18; + 1/2 SIZES	12 PAIR	\$ 42.30
3700	BLACK OR WHITE HIGH TOP LEATHER TIE OXFORD	REG; 4E	2.0 - 18; + 1/2 SIZES	12 PAIR	\$ 46.40
CV2900	BLACK CLEAR SOLE LEATHER VELCRO ATHLETIC OXFORD	REG; WIDE	4.0 - 15; +1/2 SIZES	12 PAIR	\$ 44.80
CV3000	BLACK CLEAR SOLE LEATHER VELCRO ATHLETIC OXFORD	REG; WIDE	4.0 - 15; 1/2 SIZES	12 PAIR	\$ 44.80
SV2500	BLACK SOLID SOLE LEATHER VELCRO MESH ATHLETIC	REG; WIDE	3.0 - 17; + 1/2 SIZES	12 PAIR	\$ 42.20
HOUSE SLIPPERS					
4049L	LADIES TERRY CLOTH SLIPPERS -- PINK - LT. BLUE	WIDE	S;M;L;XL;XXL	24 PAIR	\$ 11.90
4049M	MEN 'S TERRY CLOTH SLIPPERS -- BLACK - NAVY	WIDE	S;M;L;XL;XXL;XXXL	24 PAIR	\$ 11.90
SHOWER SHOES -- EVA					
SC-111	PVC UNI-FOOT SHOWER SLIDE -- ORANGE		S;M;L;XL;XXL;XXXL	36 PAIR	\$ 18.40
555	EVA SHOWER SLIDE -- ORANGE		S;M;L;XL;XXL;XXXL	36 PAIR	\$ 18.40
888	BASKET WEAVE PVC SHOWER SHOES - TAN OR ORANGE	REG	3.0 - 18	24 PAIR	\$ 13.20
3333	STEP IN EVA SHOE -- BLACK	REG	S;M;L;XL;XXL;XXXL	36 PAIR	\$ 21.00
70774	STEP IN EVA SHOE -- ORANGE	REG	S;M;L;XL;XXL;XXXL	12 PAIR	\$ 27.60
11051V	V - STRAP -- FLIP FLOP -- THONG -- SHOWER SHOES	REG	S;M;L;XL;XXL;XXXL	72 PAIR	\$ 5.20
11052X	X - STRAP -- CROSS STRAP -- SHOWER SHOES	REG	S;M;L;XL;XXL;XXXL	72 PAIR	\$ 5.60
MISC. SHOE ITEMS					
BELT	52" NAVY MILITARY STYLE 1 1/4" WIDE COTTON/POLY	52" BELT WITH METAL TIP	ONE SIZE	144	\$ 3.40
BUCKLE	NICKLE BASE METAL WITH GILT COLOR PLATING	GILT PLATED FINISH	ONE SIZE	144	\$ 1.30
LACES	54" BLACK; BROWN; WHITE SHOE LACES	54"	54"	72 PAIR	\$ 59.80
SOCKS	TUBE SOCKS; CREW SOCKS; WHITE	MEN	MEN	12 PAIR	\$ 13.50
INSOLES	INSOLES PAIR ONE SIZE FITS ALL	ONE SIZE FITS ALL	TRIM TO FIT	12 PAIR	\$ 8.00
BRANNOCK	BRANNOCK FOOT MEASURING DEVICE		BOX	1 PER	\$ 200.00

LIST PRICE ONLY---SHIPPING EXTRA

PRICES SUBJECT TO CHANGE WITHOUT NOTICE

ADD **\$1.00** PER PAIR TO CANVAS SHOES OVER SIZE **15.0**

ADD **\$3.00** TO LEATHER BOOTS FOR **EACH SIZE** OVER **15.0**



SPECIFICATIONS FOR: Canvas Deck Shoes #6199

STYLE	6199 MEN/WOMEN'S CANVAS SLIP-ON
UPPER	8 OUNCE COTTON DUCK FACE WITH 5 OUNCE CANVAS LAMINATED INSIDE BACKING. TOTAL CANVAS WEIGHT 13 OUNCES. HEAVY ELASTIC GORING FOR GOOD FIT.
INSOLE	6.5 OUNCE COTTON DUCK SEWN TO UPPER TO INSURE AGAINST SEPERATION.
MIDSOLE	CUSHION FOAM OF ELASTIMERIC ¼ INCH.
SOLE	NON-SKID RUBBER VULCANIZED TO WHITE RUBBER FOXING.
HEEL	TWO PLY COUNTER OF COARSE COTTON DUCK AND 1/8 INCH ELASTIMERIC RESIN DOUBLE STITCHED WITH TAPE BINDING.
SIZES & WIDTH	AVAILABLE WHOLE SIZES 2 TO 12, 13, 14, 15, 16. (CROSS MARKED WITH MENS & WOMENS SIZES). ALL SHOES ARE MADE IN WIDE WIDTH .
PACKING	24 PAIRS PER CASE. AVERAGE PAIR WEIGHT 1.5 POUNDS
COLOR(S)	NAVY, WHITE, ORANGE, OR BLACK.



SPECIFICATIONS FOR STYLE #326 CANVAS SLIP ON

UPPER: 11 OUNCE OR HEAVIER COTTON DUCK

TOE CAP: PROTECTIVE RUBBER CAP ON TOE

INSOLE: 6 OUNCE COTTON SEWN TO UPPER

HEEL COUNTER: SOFT PADDED HEEL COUNTER

SOLE: EXTRA THICK BASKETBALL TYPE SOLE

HEEL: 2 PLY COUNTER

DOUBLE VULCANIZE SOLE CONSTRUCTION

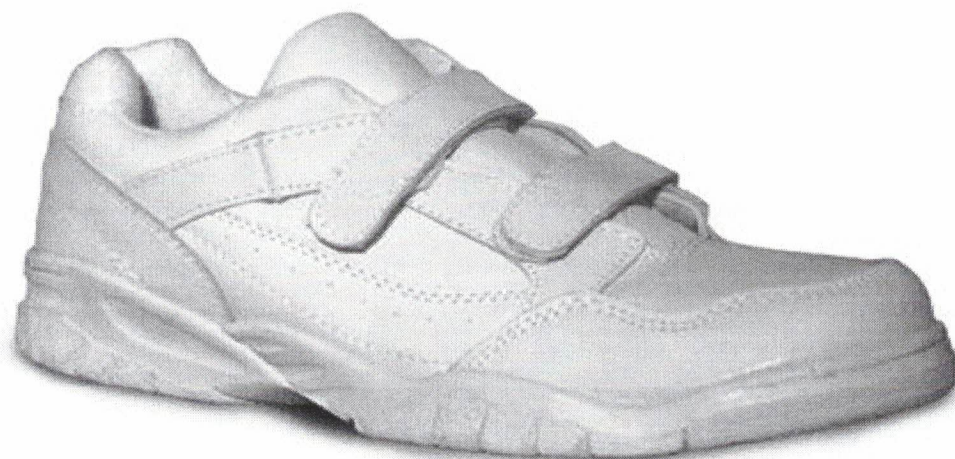
SIZES: WHOLE SIZES 4 TO 16 MEN'S AND WOMENS SIZES

PACKING: 24 PAIRS PER CASE

COLOR(S): NAVY, ORANGE OR WHITE

SPECIFICATIONS LEATHER ATHLETIC LOW TOP VELCRO STYLE# 2800 BLACK OR WHITE

UPPERS:	LEATHER OF 1.4 TO 1.6 MM, VENTILATION HOLES IN VAMP AND BOTH SIDES, ANTI-FUNGAL. NO METAL OR PLASTIC EYELETS FOR SAFETY AND LONG WEAR. HEAVY DUTY VELCRO STRAPS.
DESIGN:	WATER RESISTANT CROSS TRAINER FOR COURT WEAR AND OUTDOORS.
TONGUE:	PADDED WITH MOISTURE WICKING "CAMBRELLE."
LINING:	"CAMBRELLE" PADDED COLLAR AND HEEL AREA.
INSOLE:	CONTOURED EVA MATERIAL WITH non-removable ARCH SUPPORT COVERED WITH "CAMBRELLE", INSOLE ANTI-BACTERIAL -- ANTI-FUNGAL TREATED
OUTSOLE:	NON SLIP, NON MARKING CUP SOLE WITH HEEL STABILIZER , TOE BUMPER UPPER STITCHED TO SOLE AND AT THE HEEL AND TOE THROUGH HEAVY RUBBER.
COLOR(s):	SOLID BLACK OR WHITE WITHOUT ANY COLOR OR BRAND NAME.
SIZING:	CROSS MARKED ON BOXES AND UNDER TONGUE WITH MALE AND FEMALE SIZES. MEN'S WHOLE SIZES 2-12 and HALF SIZES 2.5 – 12.0 AND WOMENS WHOLE SIZES 5 – 13 and HALF SIZES 5.5 – 12.5 . AVAILABLE IN 2 WIDTHS, REGULAR AND 4E (EXTRA WIDE) . REGULAR IS A FULL CUT. WIDE IS NOT AVAILABLE DUE TO FULL CUT AND ADJUSTABLE STRAPS.
PACKAGING	12 PAIR OF SHOES TO A SHIPPING CASE



BLACK AND WHITE AVAILABILITY ---- SHOWN IN WHITE TO SHOW DETAIL



SPECIFICATIONS FOR LEATHER ATHLETIC SHOES
#2700 LOW TOP LACE UP
BLACK OR WHITE

UPPERS:	LEATHER OF 1.4 TO 1.6 MM, VENTILATION HOLES IN VAMP AND BOTH SIDES, ANTI-FUNGAL. NO METAL OR PLASTIC EYELETS FOR SAFETY AND LONG WEAR. HEAVY ATHLETIC TYPE LACES FOR TIES.
DESIGN:	CROSS TRAINER FOR COURT WEAR AND OUTDOORS.
TONGUE:	PADDED WITH MOISTURE WICKING "CAMBRELLE."
LINING:	"CAMBRELLE" PADDED COLLAR AND HEEL AREA.
INSOLE:	CONTOURED EVA MATERIAL WITH ARCH SUPPORT COVERED WITH "CAMBRELLE"
OUTSOLE:	NON SLIP, NON MARKING CUP SOLE WITH HEEL STABILIZER, TOE BUMPER UPPER STITCHED TO SOLE AND AT THE HEEL AND TOE THROUGH HEAVY RUBBER.
COLOR(s):	SOLID BLACK OR WHITE WITHOUT ANY COLOR OR BRAND NAME.
SIZING:	CROSS MARKED ON BOXES AND UNDER TONGUE WITH MALE AND FEMALE SIZES. MEN'S 3-18 AND FEMALE 5-20. AVAILABLE IN 2 WIDTHS, REGULAR AND 4E.

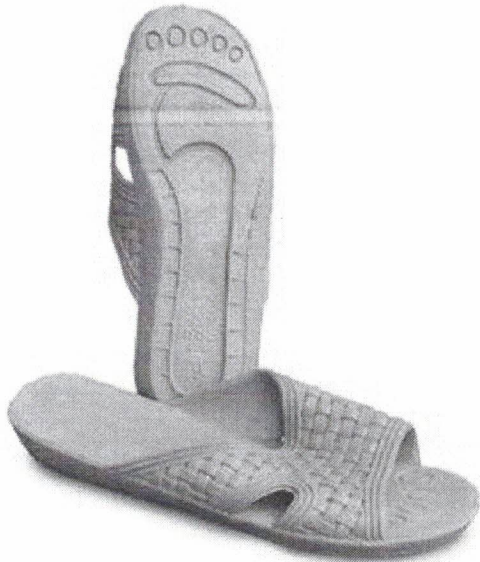


Style 41192 Men's and Women's Black Velcro Jogger
Style 42292 Men's and Women's White Velcro Jogger

- *Upper: 51 % suede leather (not man made suede), 49% nylon fabric
- *Straps: Two suede leather with Velcro, 1" wide, double stitched on tips.
- *Eyelets: No Metal or plastic in the holes that straps goes through.
- *Lining: Cambrelle type heel lining and fabric lining in the front part.
- *Tongue: Nylon with 1/8 inch foam padding.
- *Insole: Cushioned foam rubber insole with arch.
- *Heel Counter Raised higher at the back, notched and padded for comfort.
- *Outsole: Non-skid rubber, jogging style toe and heel for impact and running.
- *The sole is made of non-marking white dual density rubber, 5/8 inch thick.
- *Construction: Cemented, not vulcanized and will withstand hand washing.
- *Packing: Packed in boxes, stamped with male/female sizes on the case and shoe Box with 12 pairs per size per case.

- *Label: permanently sewn under tongue with the male and female sizes.

- *Sizes: available from men's 2 (female 4) to men's size 15, half sizes to 12 1/2 .



SPECIFICATIONS FOR PVC INDOOR/OUTDOOR SANDAL STYLE #888 BROWN / TAN , ORANGE

CONSTRUCTION	DURABLE ONE PIECE CONSTRUCTION WASHABLE. ANTI-BACTERIAL, ANTI-FUNGAL
SOLE	NON-SKID, NON MARKING PVC
DESIGN	BASKET WEAVE, SUITABLE FOR INDOOR OR OUTDOOR WEAR
COLOR(s)	BROWN/TAN, AND ORANGE, OR CALL FOR CUSTOM COLORS
SIZES	MENS AND WOMENS SIZES AVAILABLE FROM 3-15
PACKAGING	PACKED 24 PAIRS PER CASE , PAIRS INDIVIDUALLY POLY BAGGED
WEIGHT	AVERAGE WEIGHT 1.4 LBS. PER PAIR



SHOE CORPORATION #21 BOOT

BLACK -- BROWN

CORRECTED FULL GRAIN LEATHER

- **Upper:** 6" Black full grain corrected leather with smooth finish and plain seamless toe.
- **Vamp Lining:** 4 ounce drill cotton, and "Cambrelle" quarter lining, padded inside collar.
- **Insole:** Cushion "Cambrelle" heel to toe insole.
- **Toe Box:** Hard, non-safety chemically impregnated
- **Outsole and Heel:** 18 Iron rubber with non-skid sole design.
- **Construction:** Goodyear welt and sole stitched to upper all around boot.
- **Sizes:** 3 to 18 (Women's 5 to 21) ½ sizes and Widths -- Reg., 2E, 3E.
- **Heel:** Two piece sole system. Has a "V" notched heel for tracking.
- **Package:** 12 pair to a case

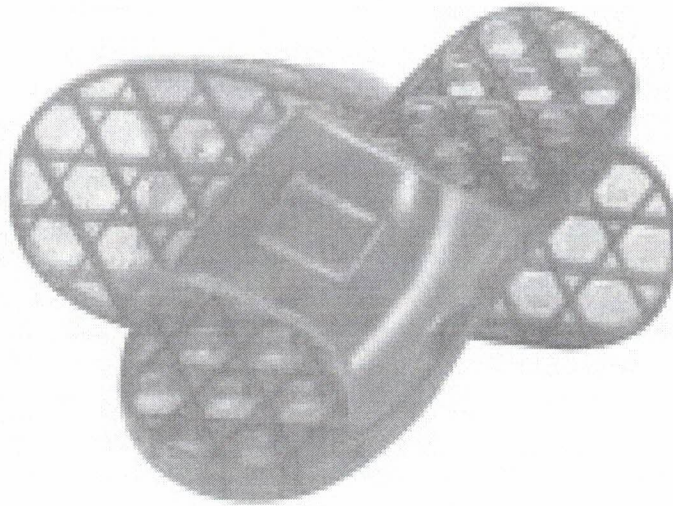
SHOE CORP



#CV2900 CLEAR SOLE LEATHER HOOK & LOOP ATHLETIC

FULL LENGTH "TRUE CLEAR" SOLE

UPPERS:	LEATHER OF 1.4 TO 1.6 MM, NYLON MESH IN VAMP AND BOTH SIDES, ANTI-FUNGAL. NO METAL OR PLASTIC EYELETS FOR SAFETY AND LONG WEAR. HEAVY DUTY HOOK & LOOP STRAPS.
DESIGN:	CROSS TRAINER FOR COURT WEAR AND OUTDOORS. "TRUE CLEAR" SOLE NOT MILKY CONSTRUCTION.
TONGUE:	PADDED WITH MOISTURE WICKING "CAMBRELLE."
LINING:	"CAMBRELLE" PADDED COLLAR AND HEEL AREA.
INSOLE:	CONTOURED EVA MATERIAL WITH ARCH SUPPORT COVERED WITH "CAMBRELLE", INSOLE ANTI-BACTERIAL -- ANTI-FUNGAL TREATED. GLUED.
OUTSOLE:	NON SLIP, NON MARKING CUP SOLE WITH HEEL STABILIZER , OUTSOLE IS GLUED AND COMPLETELY SEWN AROUND SOLE WITH NYLON THREAD TO THE LEATHER UPPER.
COLOR(s):	SOLID BLACK WITHOUT ANY COLOR OR BRAND NAME.
SIZING:	CROSS MARKED ON OUTSIDE BOXES AND UNDER TONGUE WITH MALE AND FEMALE SIZES. MEN'S 3-17 AND WOMENS 5 - 19 . AVAILABLE IN 2 WIDTHS, REGULAR (R, M, D, E) AND WIDE (EE). REGULAR IS A FULL CUT.
PACKAGING	12 PAIR OF SHOES TO A SHIPPING CASE



SC #111 TRANSLUCENT UNI-SHOWER SHOE

CONSTRUCTED FROM FLEXABLE PVC TO ADD A NEW LEVEL OF SECURITY

UNI-FOOT FITTING CONSTRUCTION LOWERS STOCKING COST AND INVENTORY MANAGEMENT. THERE IS NO RIGHT OR LEFT FOOT SHAPE.

TRANSLUCENT PVC IS IDEAL FOR CHECKING FOR ILLEGLE CONTRABAND IN PRISONS / JAILS / DENTENSION CENTERS.

SLIP-RESISTANT; NON-MARKING.

SIZES: SMALL (5 -6); MEDIUM (7 -8); LARGE (9 -10); X-LARGE (11 – 12); 2X-LARGE (13 -14); 3X-LARGE (15 -16).

COLOR TRANSLUCENT ORANGE.

PACKAGED 36 PAIR TO A CASE.